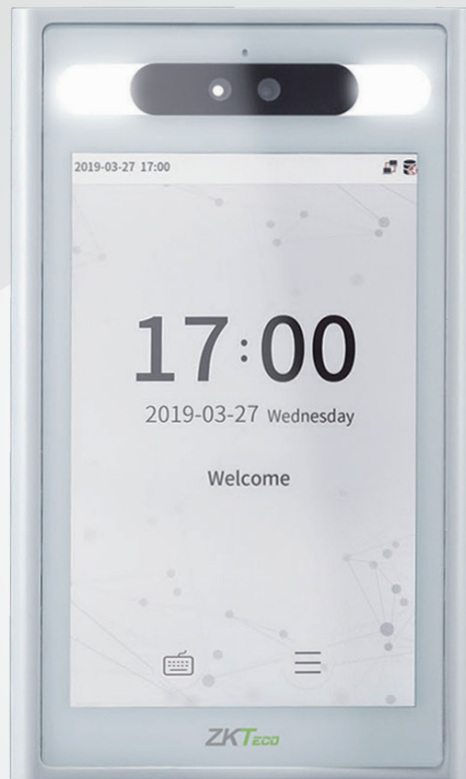


# Elite Access

## Robust Facial Recognition Terminal with Ultra-large Capacity

Compatible with  
**ZKBio CVSecurity**



**Elite Access** is a new high-level facial recognition terminal with extremely powerful facial recognition capability supported with ZKTeco's customized powerful CPU and ultra-large capacity of facial templates, a maximum of 50,000 facial templates for 1:N recognition.

With its powerful core and the latest facial recognition algorithm, Elite Access rapidly recognizes a face within 0.3 second, while effectively preventing any kinds of print attack with its strong anti-spoofing algorithm.

Besides, Elite Access is equipped with a 2MP low-light WDR camera and backed by an international standard rating of IP68 and IK04 which guarantees high-quality facial recognition and outdoor durability under challenging lighting conditions (0.5lux - 50,000lux) and extreme weather from -30°C to 60°C.

## Features

- Ultra-large capacity: 30,000 facial templates (standard) or 50,000 facial templates (optional) for 1:N facial authentication
- Unrivalled facial recognition speed (less than 0.3 seconds per face)
- 2MP starlight CMOS sensor camera with WDR function, which enables the terminal to recognize faces under challenging lighting environment (0.5 lux – 50,000 lux)
- Anti-spoofing algorithm against print attack (laser, color and B/W photos), videos attack, and 3D mask attack
- Smart energy-saving design; a microwave detector will wake up the terminal when it precisely detects the distance between the user and the device is 3 meters (~9.84 feet) or less
- 8" touchscreen with 400 lux, which offers high visibility under strong and direct light
- Supplement lighting with adjustable brightness
- Multiple communication methods: TCP/IP
- IP68 dust-proof and waterproof standard and IK04 vandal-proof standard
- Wide range of working temperature (-30 ~ 60°C; -22 ~ 140°F)

## Specifications (Green Label Premium Feature)

### Capacity

<span style="color: green;">G</span> Faces:	30,000 (standard) 50,000 (optional)
Users:	50,000
<span style="color: green;">G</span> Transactions:	1,000,000
User Photos:	20,000
Event Photos:	10,000

### Compatibility

Security Relay Box  
ZKBio CVSecurity Software

### Standard Functions

Access Levels, Groups, Holidays, DST  
Duress Mode, Anti-Passback  
Record Query, Custom Wallpaper &  
Screen Saver, Tamper Switch Alarm

### Access Control Interfaces

Lock Relay Output  
Alarm Output / Auxiliary Input  
Exit Button / Door Sensor

### Special Functions

- G IP68 & IK04
- G 0.3s High Speed Facial Recognition
- Alive Body Detection
- HTTPS Encryption (optional)
- Event Snapshot

### Communication

TCP / IP

### Power

Operating Voltage 12V DC  
Current Draw <2,000mA

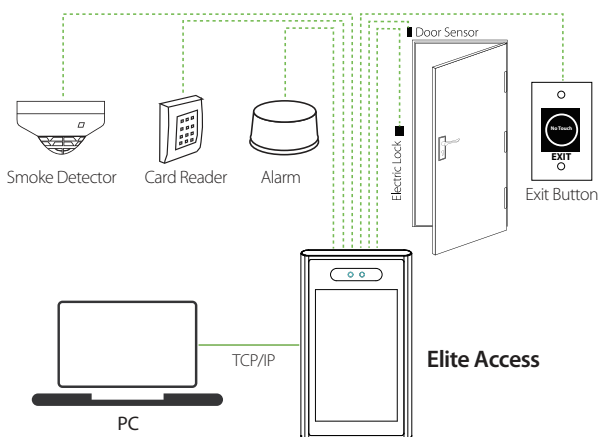
### Hardware

- G 900MHz Dual Core Customized CPU  
512MB RAM / 8G Flash
- G 125KHz EM Reader / 13.56MHZ MF (optional)
- 2MP WDR Low Light Camera
- Hi-Fi Audio
- Microwave Distance Detection Sensor
- G 8" High Brightness IPS Touch LCD
- Reset Button & Tamper Switch

### Additional Information

Face Algorithm:	ZKLiveFace 5.8
Working Temperature:	-30°C ~ 60°C (-22°F ~ 140°F)
Working Humidity:	≤93%
Storage Temperature:	-40°C ~ +65°C (-40°F ~ +149°F)
Storage Humidity:	≤93%
Net Weight:	1,483g
Dimensions (H*L*D):	245.6*144*25.0mm

## Wiring Diagram



## Dimensions (mm)

