



ZL500

Wireless Hotel Lock



Remote Monitoring



Contactless Verification



One-card Solution



Emergency Opening



Compatible with ZKBioSecurity

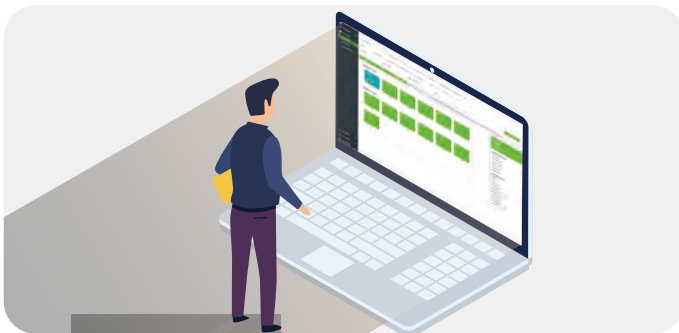


ZL500, a new cutting-edge wireless hotel lock, is compatible with the ZKBioSecurity software (ZKBioHLMS), supporting real-time remote monitoring of room and gateway status.

It provides a one-card solution to heighten the convenience of using ZKTeco's hotel management system and an open API for 3rd-party integration. Most importantly, it helps create a contactless environment, which is a necessity during any healthcare crisis.

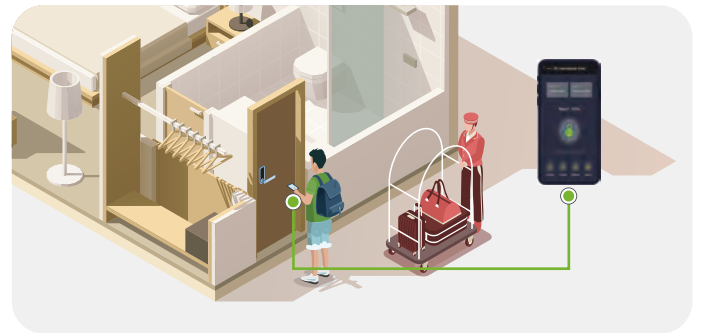
In short, ZL500 offers an innovative hotel solution for the hospitality industry, especially for luxury hotels. It enhances the efficiency and convenience of the hotel workforce and guests.

Features



Remote Monitoring

Monitor door status in real-time from anywhere



Contactless Verification

Unlock via the smartphone HTML5 (H5)



One-Card Solution

Guest's data about public facilities authorization, access control, guestroom access rights and elevator control are written into the guest's card



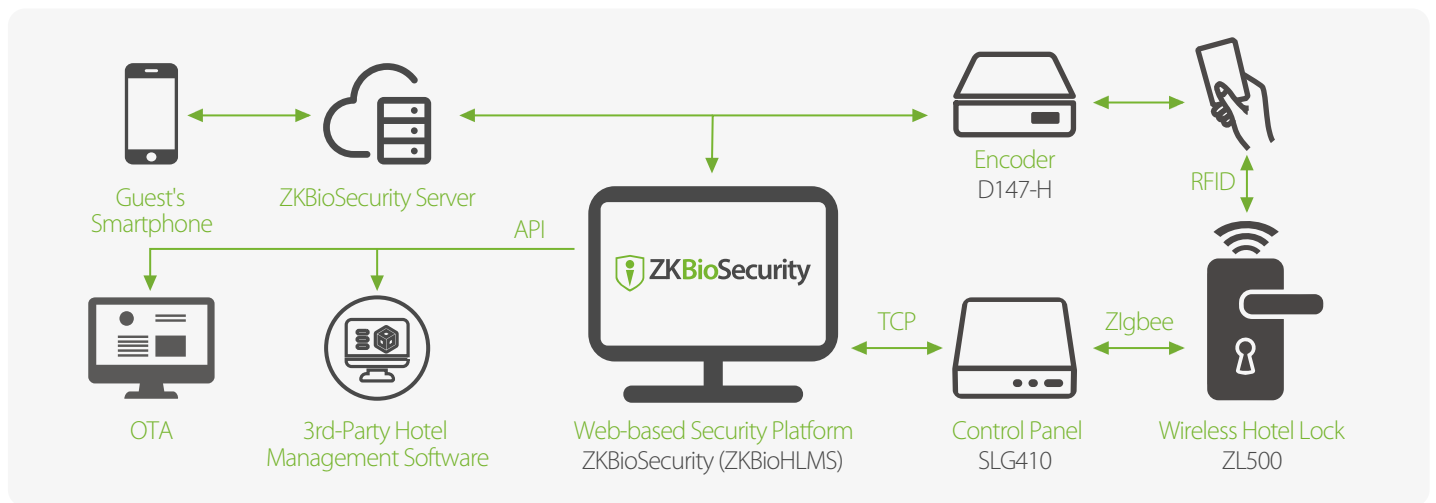
Free Egress

Door locks must always automatically open to the outside in case of emergency

Specifications

| | | | |
|---------------|--|-----------------------|-----------------------------------|
| Material | Zinc Alloy and PMMA | Door Thickness | 35mm to 45mm |
| Mortise | American Standard Mortise with 5 Latches | Dimensions (W*L*D) | 298 * 70 * 20 (mm) |
| Card Reader | D147-H | Operating Temperature | -20°C to 55°C |
| Communication | ZigBee | Operating Humidity | 5% to 95% RH |
| Power Supply | 4 × AA Alkaline Battery | Certification(s) | CE-RED |
| Battery Life | 1 Year | Card Type | ISO 14443 (RFID) Type-A S50 / S70 |

Configuration



Dimensions (mm)

